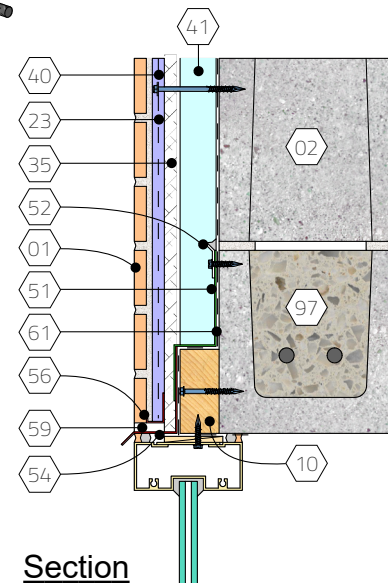
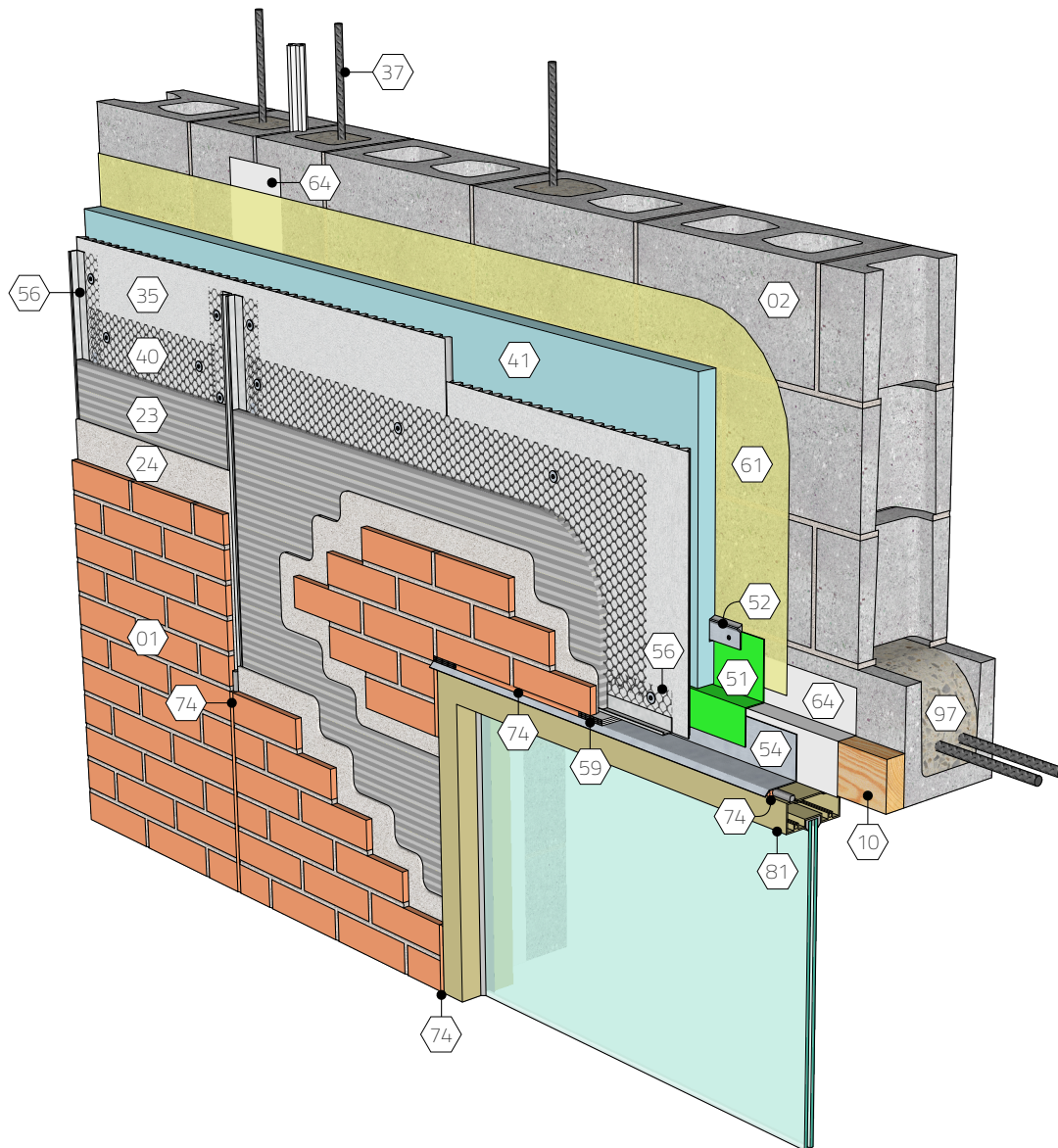


KEY NOTES

- 01 Brick, thin
- 02 Concrete masonry backing
- 10 Blocking
- 22 Grout per structural design
- 23 Mortar scratch coat
- 24 Mortar bond coat / setting bed
- 35 Drainage medium
- 37 Reinforcement per structural design
- 40 Lath w/ approved fasteners
- 41 Insulation
- 51 Flashing
- 52 Termination bar w/ continuous bead of sealant at top
- 54 Metal pan flashing / drip edge
- 56 Casing bead
- 59 Weep vent
- 61 Air/moisture/vapor barrier as req'd
- 64 Transition membrane
- 74 Sealant & backer rod
- 75 Sealant
- 78 Shims
- 81 Window assembly
- 97 Reinforced masonry lintel per structural design



Section

KEYWORDS

Adhered veneer, AVM, Thin brick,
Window head, Head

TITLE

Window head | Adhered brick veneer, CMU backing

SCALE

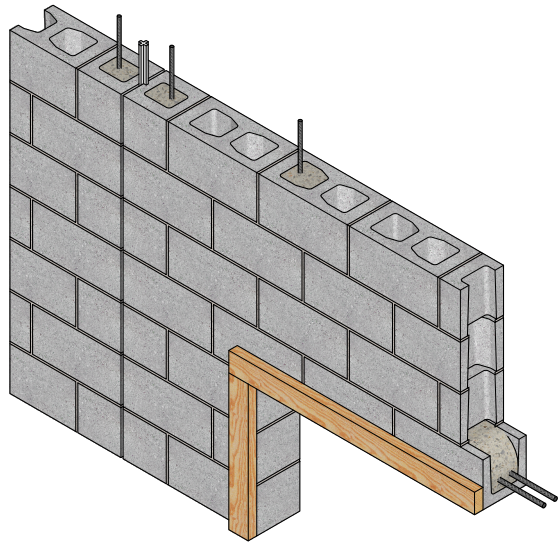
None

REV.

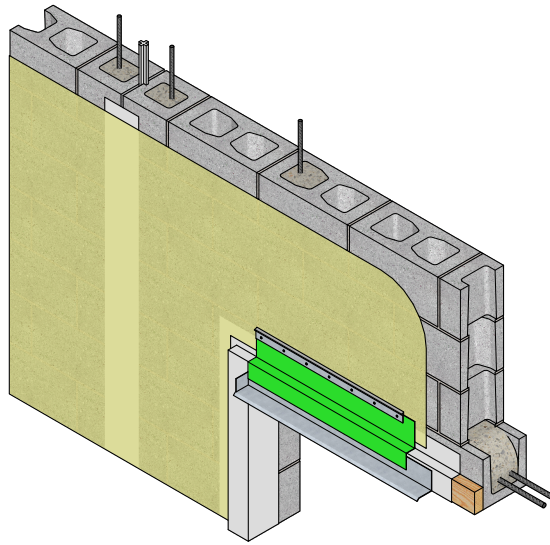
06/22/21

SHEET NO.

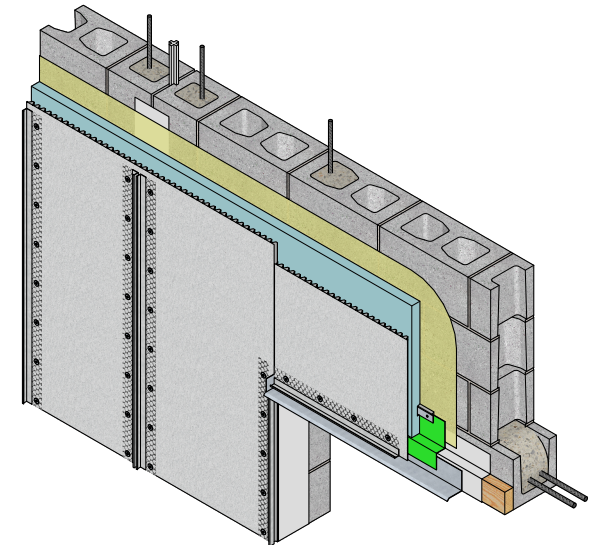
01.070.0601



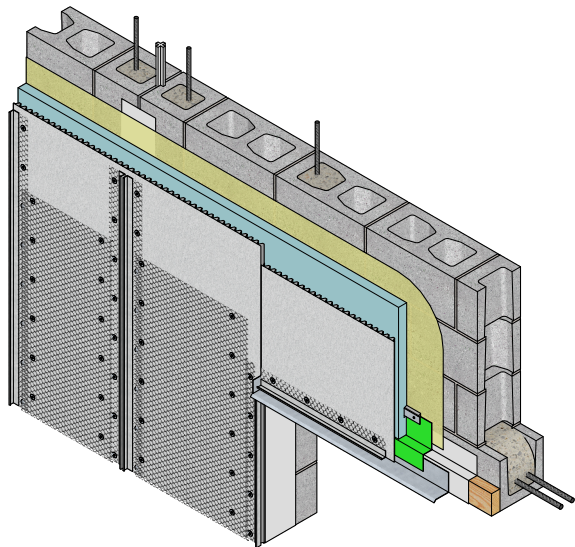
1. Rough opening, blocking



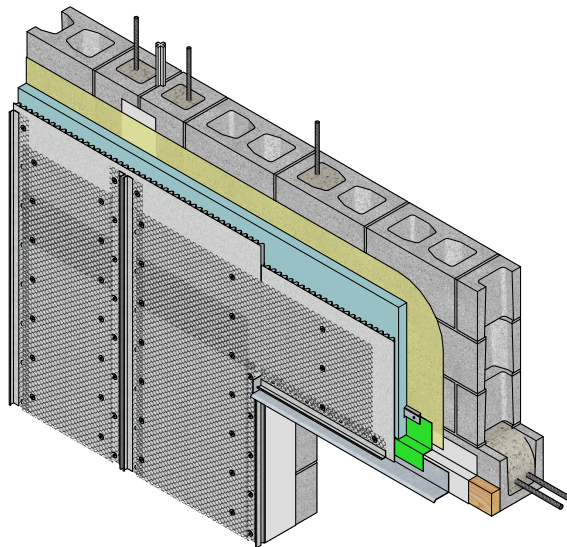
2. Transition membrane, AB, pan flashing w/ drip edge, through-wall flashing, term bar



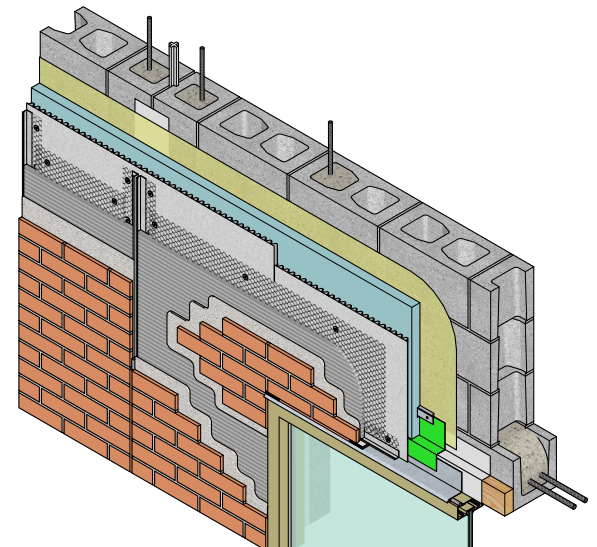
3. Insulation, drainage medium, casing beads



4. Lath (lower)



5. Lath (upper) shingled over lath (lower)



Scratch coat embedding lath, bond coat, adhered brick veneer, window assembly, expansion joint

TITLE

Window head sequencing | Adhered brick veneer, CMU backing

SCALE

None

REV.

06/22/21

SHEET NO.

01.070.0601

Drawing No.	01.070.0601
Drawing Title	Window head Adhered brick veneer, CMU backing
Description	This detail illustrates an window head condition in an adhered veneer wall with CMU backing. A vertical control joint in the CMU is treated with transition membrane which engages with the air/moisture/vapor barrier in the field of the wall providing continuous resistance to air and moisture. A similar transition membrane wraps the blocking around the window perimeter, providing continuity of air and moisture control at the termination of the air barrier. Continuous insulation offers excellent thermal control. A drainage mat collects moisture that may penetrate the veneer and diverts it out through the weep vents. Self-furring lath is screwed through the drainage and insulation into the CMU with approved fasteners at required spacing and is embedded in the scratch coat. Casing beads engage with the lath to form terminations and brick expansion joints as required. The thin brick veneer is adhered to the scratch coat with a modified bonding mortar per design.
3D Warehouse Link	https://3dwarehouse.sketchup.com/model/a88af2ab-a6e8-4af8-9691-6cfd73099f9f/010700601-Window-head-Adhered-brick-veneer-CMU-backing
Embed Code for 3D Warehouse Model	<iframe src="https://3dwarehouse.sketchup.com/embed/a88af2ab-a6e8-4af8-9691-6cfd73099f9f" frameborder="0" scrolling="no" marginheight="0" marginwidth="0" width="580" height="326" allowfullscreen></iframe>
IMI Interactive Model Blog Link	https://imisketchupmodels.blogspot.com/2021/06/010700601-window-head-adhered-brick.html
IMI MDS Link	
GIF Link	
Team	Sunup Matthew, Scott Conwell
Notes	
Date Revised	6/22/2021