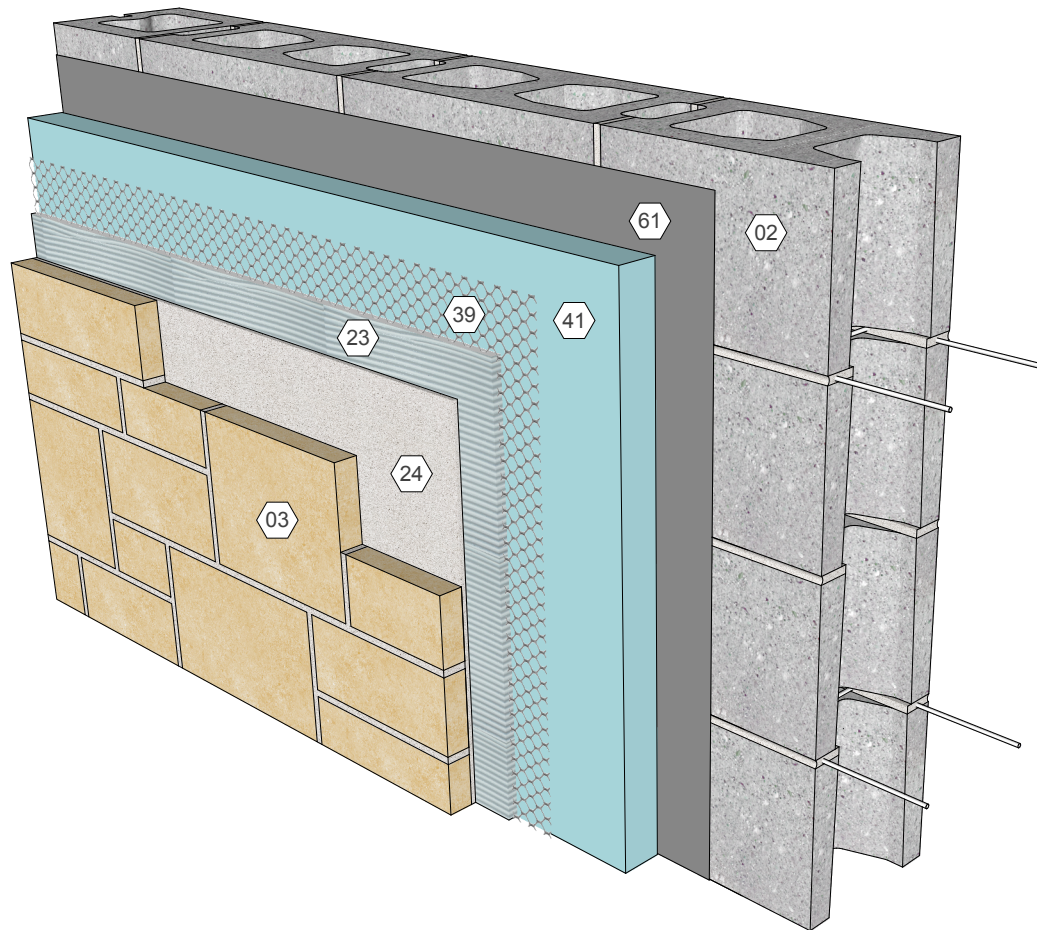


KEY NOTES

- 02 Concrete masonry backup
- 41 Cont. Insulation
- 61 Air/moisture/vapor barrier as req'd
- 39 Metal lath
- 23 Mortar, scratch coat w/ lath embedded
- 24 Mortar, bond coat
- 03 Adhered veneer



KEY WORDS

Adhered veneer, thin stone veneer, stone, CMU, lath, MVMA 48

International Masonry Institute



WALL SYSTEM Adhered stone veneer over CMU backup, cont. insulation
Detail 03.070.0201 Rev. 10/20/15

800-IMI-0988

www.imiweb.org

© 2015 International Masonry Institute



Figure 48. Wall-Section Over Continuous Rigid Insulation CM

