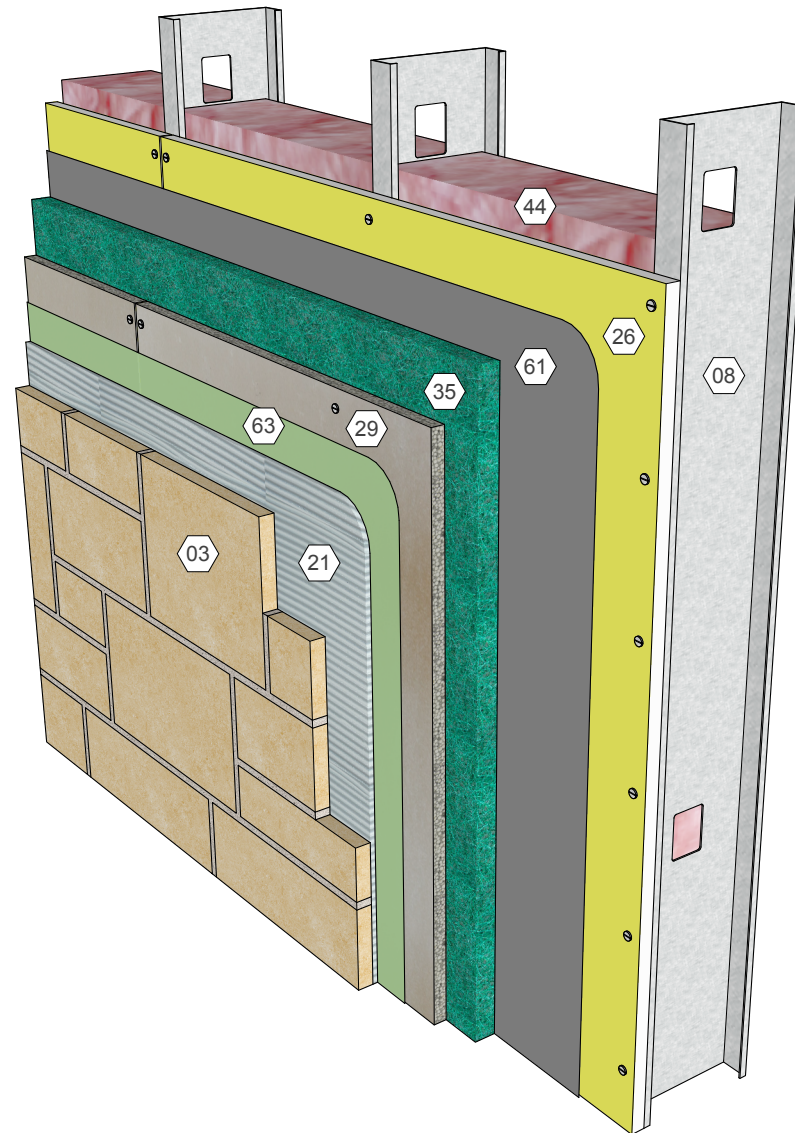


## KEY NOTES

- 03 Adhered veneer
- 08 Steel studs
- 21 Mortar, polymer-modified
- 26 Sheathing, glass mat reinforced
- 29 Sheathing, cement bd.
- 35 Drainage material
- 44 Fiberglass insulation
- 61 Air/moisture barrier
- 63 Waterproof membrane



## KEY WORDS

Adhered veneer, thin stone veneer, stone, drainage mat, drainage material, Polymer-modified mortar, Laticrete ES W244 (E)

International Masonry Institute

**team** MASONRY  
DETAILING  
SERIES

Adhered stone veneer over steel studs, cement bd, polymer modified mortar, drainage material

Wall 03.080.0221

Rev. 11/28/15

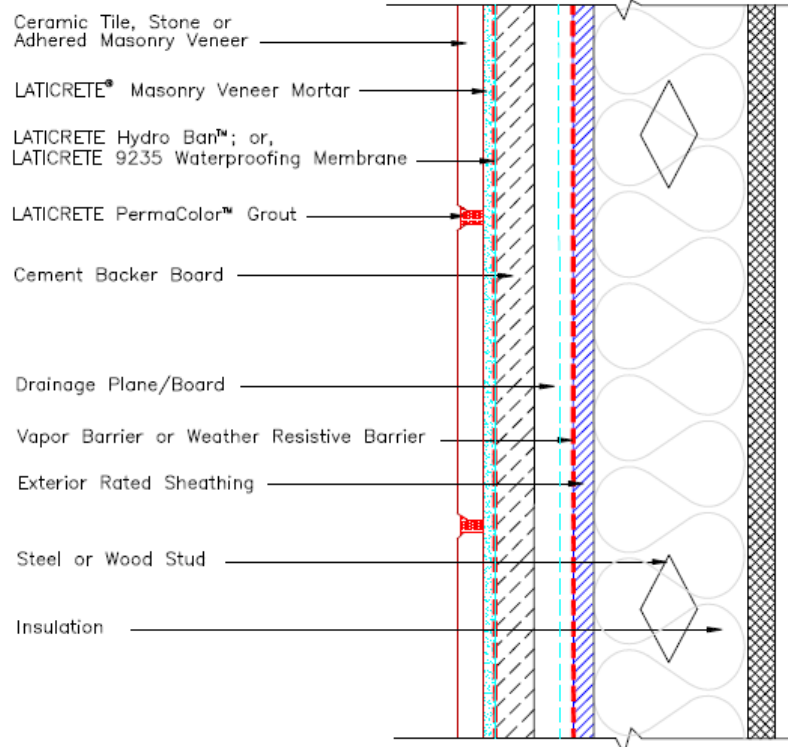
800-IMI-0988

[www.imiweb.org](http://www.imiweb.org)

© 2016 International Masonry Institute

This wall shows an adhered masonry veneer system over a rain screen cavity. The drainage material creates an air space and drainage plane between the exterior sheathing and the exterior finish materials.

Drawing No. ES W244(E)  
— Drainage Board



NOTE: This detail shows a tile, stone or adhered masonry veneer system installed over a pressure equalized rain screen cavity. The drainage plane/board creates an air space and drainage plane between the exterior rated sheathing and the exterior finish material. An opening is typically provided at the bottom of the system to allow air to enter and moisture to escape.

NOTE: LATICRETE details are provided specifically to address the installation of the adhered veneer using LATICRETE products. Design principles and specifications incorporated into the final details are the responsibility of the project design professional in compliance with all applicable building codes.

Revision Date: 11/10 Scale: N.T.S.

AS A PROFESSIONAL COURTESY, LATICRETE OFFERS TECHNICAL SERVICES FREE OF CHARGE. THE USER MAINTAINS ALL RESPONSIBILITY FOR VERIFYING THE APPLICABILITY AND SUITABILITY OF THE TECHNICAL SERVICE OR INFORMATION PROVIDED.

©2015 LATICRETE INTERNATIONAL, INC. ALL RIGHTS RESERVED. THE RIGHT TO UTILIZE LATICRETE DETAILS FOR COMMERCIAL PURPOSES IS GRANTED EXCLUSIVELY TO CONTRACTORS, ARCHITECTS, QUANTITY SURVEYORS, ENGINEERS, AND SPECIFICATIONS WRITERS. LATICRETE (®), LATICRETE (®) ARE REGISTERED TRADEMARKS OF LATICRETE INTERNATIONAL, INC. U.S. & FOREIGN PATENT AND TRADEMARK OFFICES. MARCA REGISTRADA. ALL OTHER TRADEMARKS ARE PROPERTY OF THEIR RESPECTIVE COMPANIES.

#### KEY WORDS

Adhered veneer, thin stone veneer, stone, drainage mat, drainage material, Polymer-modified mortar, Laticrete ES W244 (E)

International Masonry Institute



800-IMI-0988

www.imiweb.org

© 2016 International Masonry Institute

Adhered stone veneer over steel studs backup, rigid insulation, drainage material

Wall 03.080.0221

Rev. 11/28/15