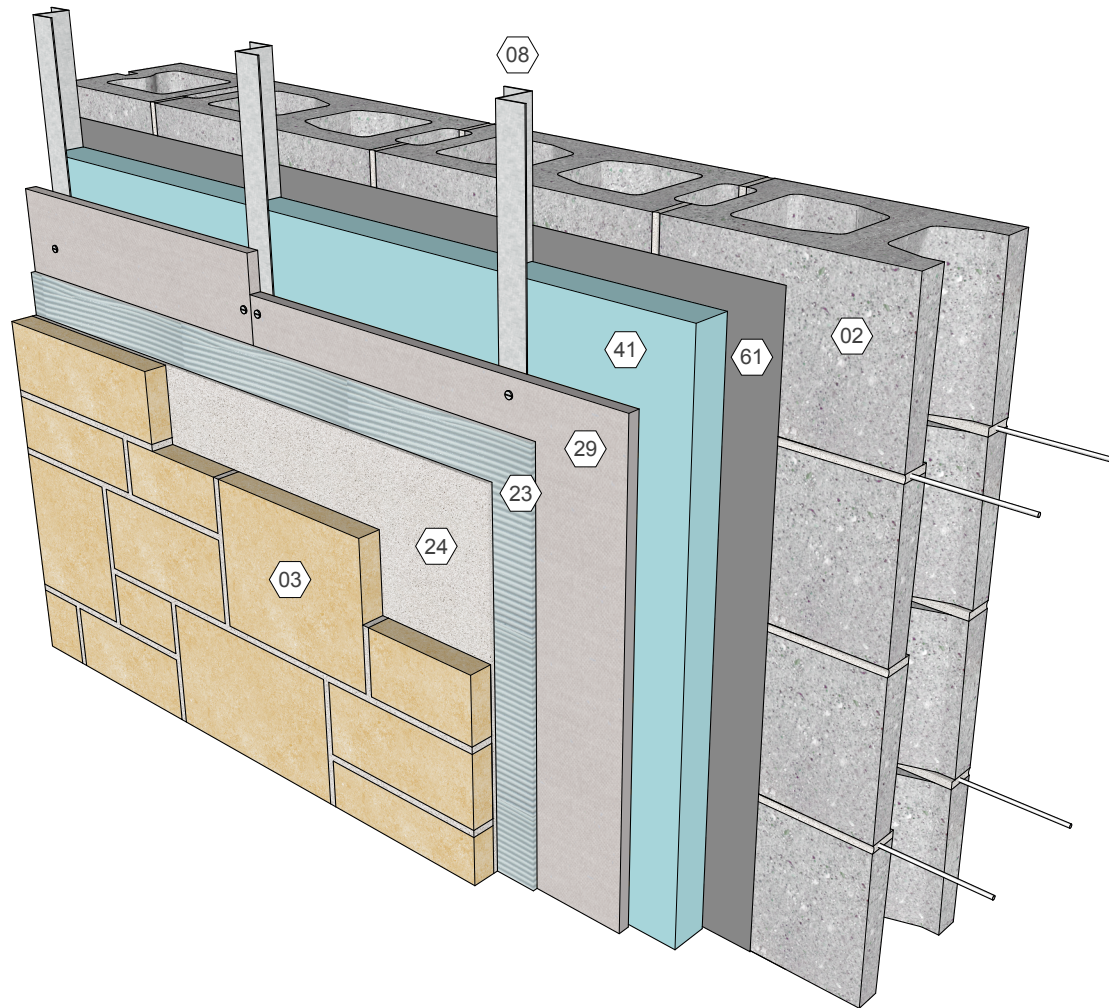


KEY NOTES

- 02 Concrete masonry backup
- 41 Insulation
- 61 Air/moisture/vapor barrier as req'd
- 29 Cement board sheathing
- 23 Mortar, scratch coat
- 24 Mortar, bond coat
- 03 Adhered veneer
- 08 Z channels



KEY WORDS

Adhered veneer, thin stone veneer, stone, CMU, MVMA 48 modified, Rosemont Masonry

International Masonry Institute



WALL SYSTEM Adhered stone veneer over CMU backup, sheathing & Z channels
Detail 03.070.0202

Rev. 10/22/15

800-IMI-0988

www.imiweb.org

© 2015 International Masonry Institute



Figure 48. Wall-Section Over Continuous Rigid Insulation CMU

