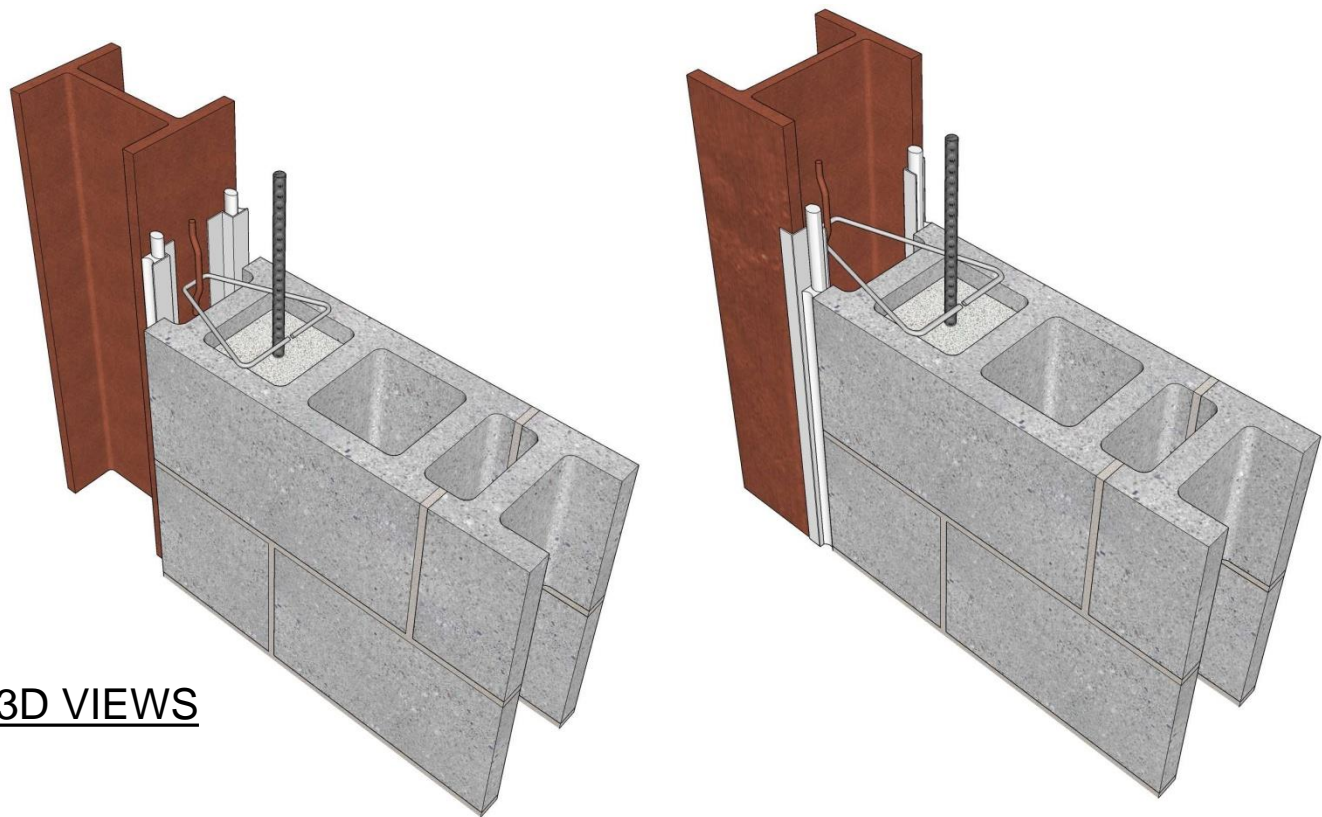


**PLANS**  
N.T.S.



**3D VIEWS**

**NOTES:**

1. FOR FIRE-RATED CONSTRUCTION, USE FIRE-RATED SEALANT
2. FIREPROOFING FOR STEEL NOT SHOWN
3. APPLIES TO TYPE I AND TYPE II HYBRID
4. TYPE III HYBRID WOULD REQUIRE FULL BEARING AT STEEL INTERFACES WITH COLUMNS & BEAMS

**COLUMN CONNECTION DETAILS OPTION 2**

DETAIL 02.120.1102

REV. 10/15/08

International Masonry Institute



800-IMI-0988 www.imiweb.org