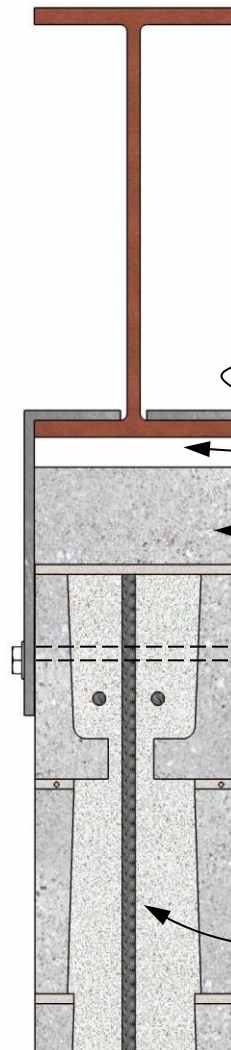


OPTION 2



SIZE GAP FOR DRIFT & DEFLECTION OF BEAM FOR TYPE I HYBRID; OR FILL GAP W/ DRYPACK FOR TYPE II OR TYPE III HYBRID

OPTION 2: SOLID BLOCK AT TOP COURSE (HEIGHT VARIES)

1/4" THK x 6" WIDE PLATES FOR SHEAR TRANSFER; WELD TO BEAM AFTER CMU PLACEMENT

THROUGH-BOLT OR LAG BOLT AS REQ'D FOR SHEAR TRANSFER

BOND BEAM AT SECOND COURSE FROM TOP

GROUT & REINFORCING AS REQ'D

UNDERSIDE OF BEAM OPTION 2

DETAIL 02.120.1202

REV. 03/02/09

International Masonry Institute



800-IMI-0988 www.imiweb.org

© 2011 INTERNATIONAL MASONRY INSTITUTE