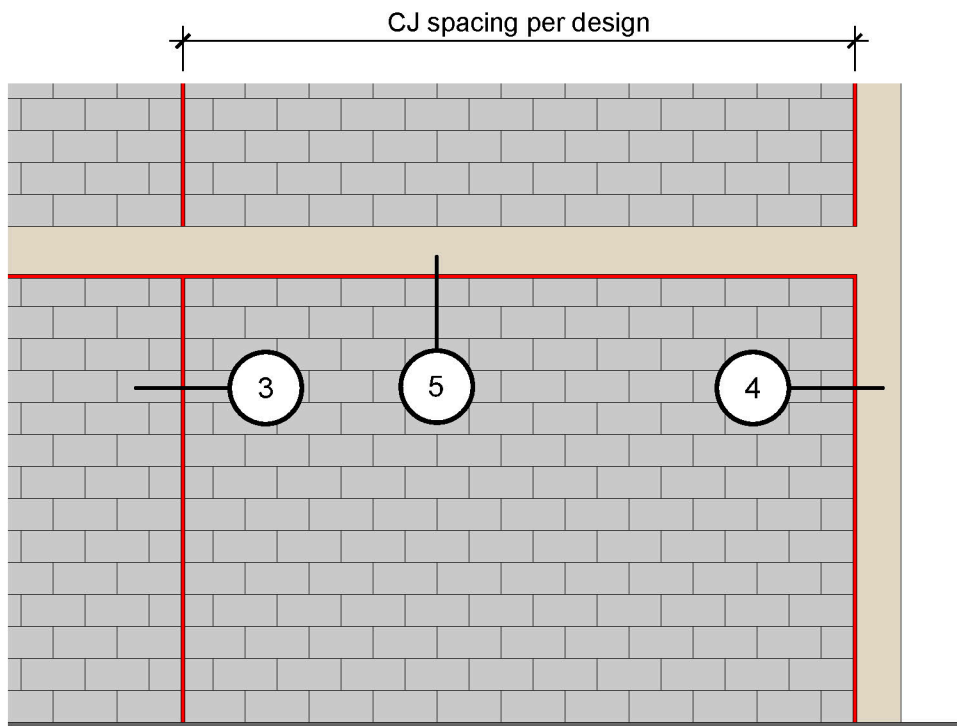


**3** CJ - CMU to CMU  
Scale: 3/4" = 1'-0"

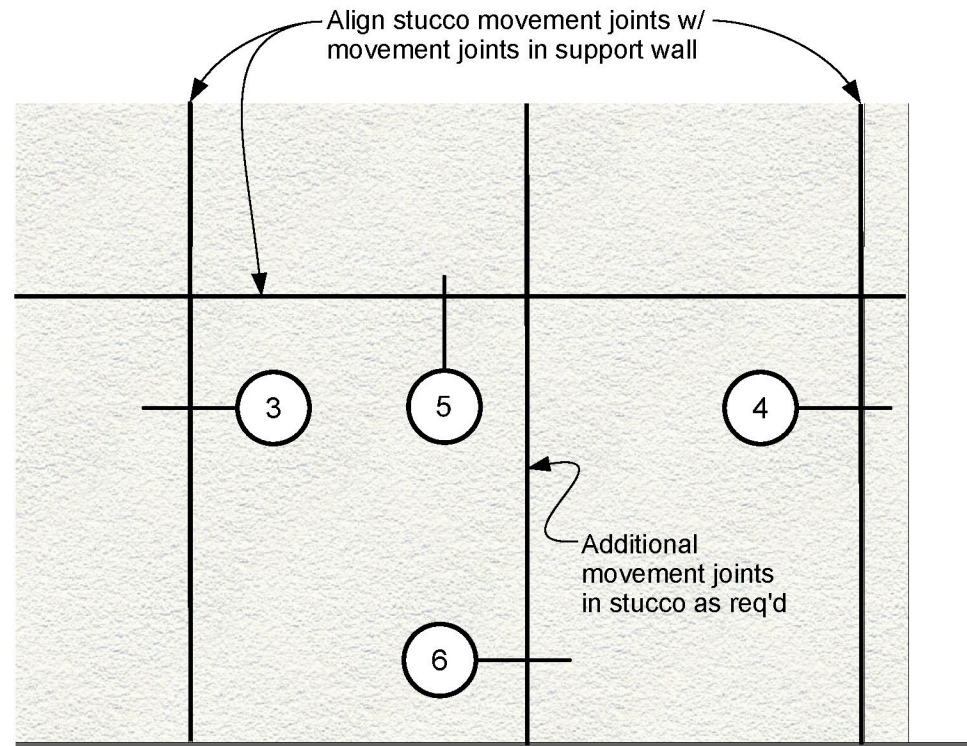
**4** CJ - CMU to conc.  
Scale: 3/4" = 1'-0"

**5** CJ - CMU to conc.  
Scale: 3/4" = 1'-0"

**6** CJ - thru stucco only  
Scale: 3/4" = 1'-0"



**1** ELEVATION CMU infill in concrete frame  
Scale: 1/4" = 1'-0"



**2** ELEVATION at stucco finish  
Scale: 1/4" = 1'-0"