

IMI

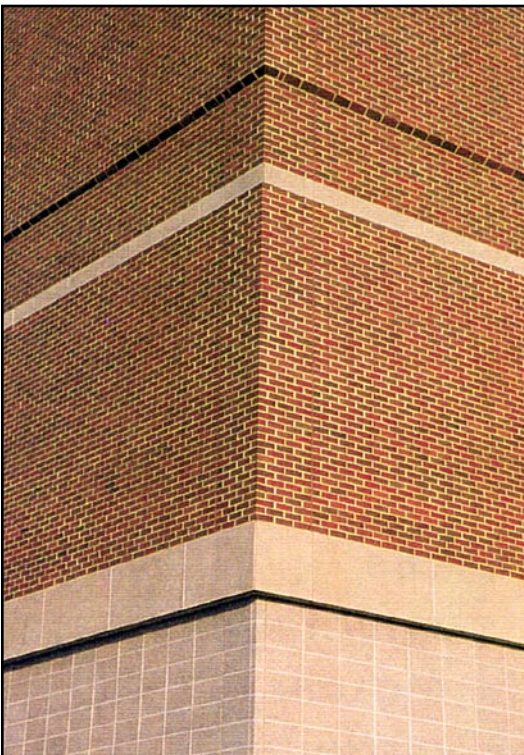


CASE STUDY

August 1999

Project highlight:

Early completion of the masonry work was critical to the success of the entire project because it provided “float time” for other trades, according to Joe Norton, Project Manager for AT&T.



AT&T RESEARCH & DEVELOPMENT

BUILDINGS SOUTH

- Middletown, New Jersey

OWNER: AT&T Corporation

ARCHITECT/ENGINEER: CUH2A, Princeton, New Jersey

CONSTRUCTION MANAGER:

Sordon/Skanska, Parsippany, New Jersey

MASON CONTRACTOR:

Speranza Brickwork, Inc., Whitehouse, New Jersey

CRAFTWORKERS: International Union of Bricklayers and Allied Craftworkers Local #5, New Jersey

SUPPLIERS: Belden Brick by Diener Brick Company;
Anchor Concrete Products

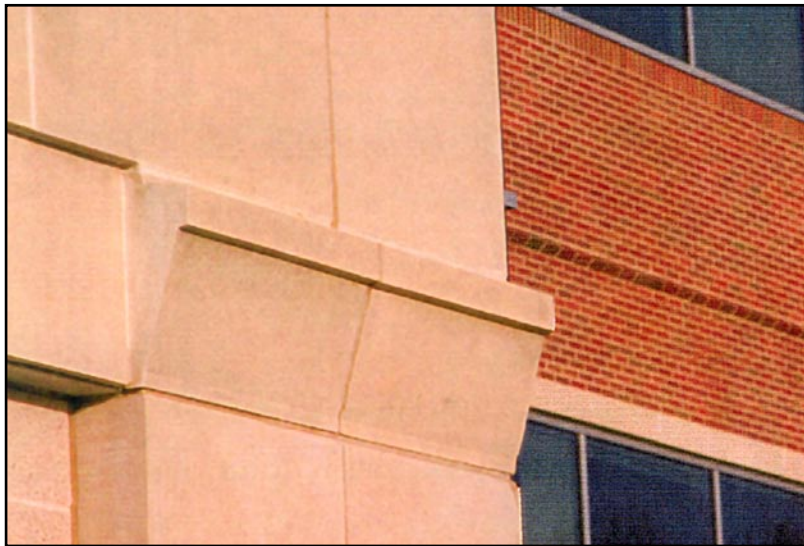
CONSTRUCTION TIME: February - July 1997; Completed 6 weeks ahead of schedule.

PROJECT COST: Total \$190 million; Masonry \$4 million (2.1%)

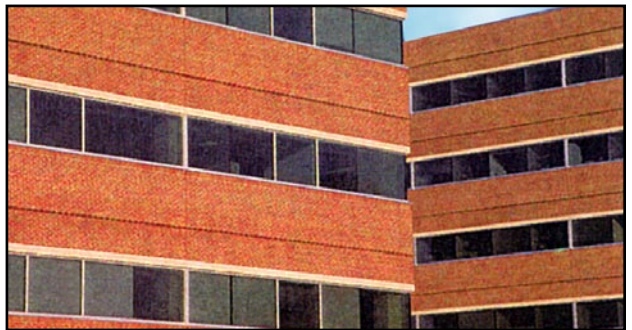
AREA: 1,000,000 sq. ft.

MASONRY: Materials included 1,000,000 Brick & 50,000 Groundface CMU; 90 bricklayers worked a total of 9,000 manhours

DESCRIPTION: Four 5-story buildings, each with 250,000 sq. ft. of floor area. The owner, AT&T, put a high priority on early occupancy. In the design phase, non-masonry materials were considered for the exterior “skin,” but the client has always relied on brick to communicate and express the AT&T corporate identity and character. Walls consisted of brick and block veneer tied to steel studs. Standard brick was used, along with a beige/white groundface concrete masonry unit in stair towers, on bridge supports for walkways, and on the base of the buildings. There was a continuous precast concrete band at the top of each row of windows and a continuous brick soldier course under the windows. There was an accent brick band between floors, and 8x8x16 groundface block with a center score were used inside the building near the elevators and on a few walls.



“Early completion of masonry work was critical to the success of the entire project.”



© IMI 1999. All Rights Reserved



**International
Masonry Institute**

42 East Street, Annapolis, MD 21401
800-IMI-0988
Fax: 301-261-2855
www.imiweb.org

The International Masonry Institute is a labor/management cooperative serving the interests of the International Union of Bricklayers and Allied Craftworkers and the contractors who employ its members.

The International Masonry Institute presents programs in four broad categories: apprenticeship and training, market development and technical services, research and development, and labor/management relations.

To reach the IMI office nearest you in North America, call 800.464.0988.