

KEY NOTES

- 02 Concrete masonry backup
- 03 Stone veneer
- 22 Grout per structural design
- 31 Horizontal joint reinforcement
- 32 Wall tie
- 34 Mortar dropping collection device
Air space: 2" recommended, 1" min. req'd by code
- 37 Reinforcement per structural design
- 41 Cavity insulation
- 51 Thru-wall flashing
Termination bar w/ cont. bead of sealant @ top
- 52 End dam
- 53 Drip edge: seal and adhere to lintel
- 54 Window flashing
- 61 Air/moisture/vapor barrier as req'd
- 81 Window assembly
- 91 Steel lintel angle
- 97 Reinforced masonry lintel

KEY WORDS

Window head, Lintel, Veneer, Stone, Flashing, Drainage, Weeps, High-performing, 03.030.0601

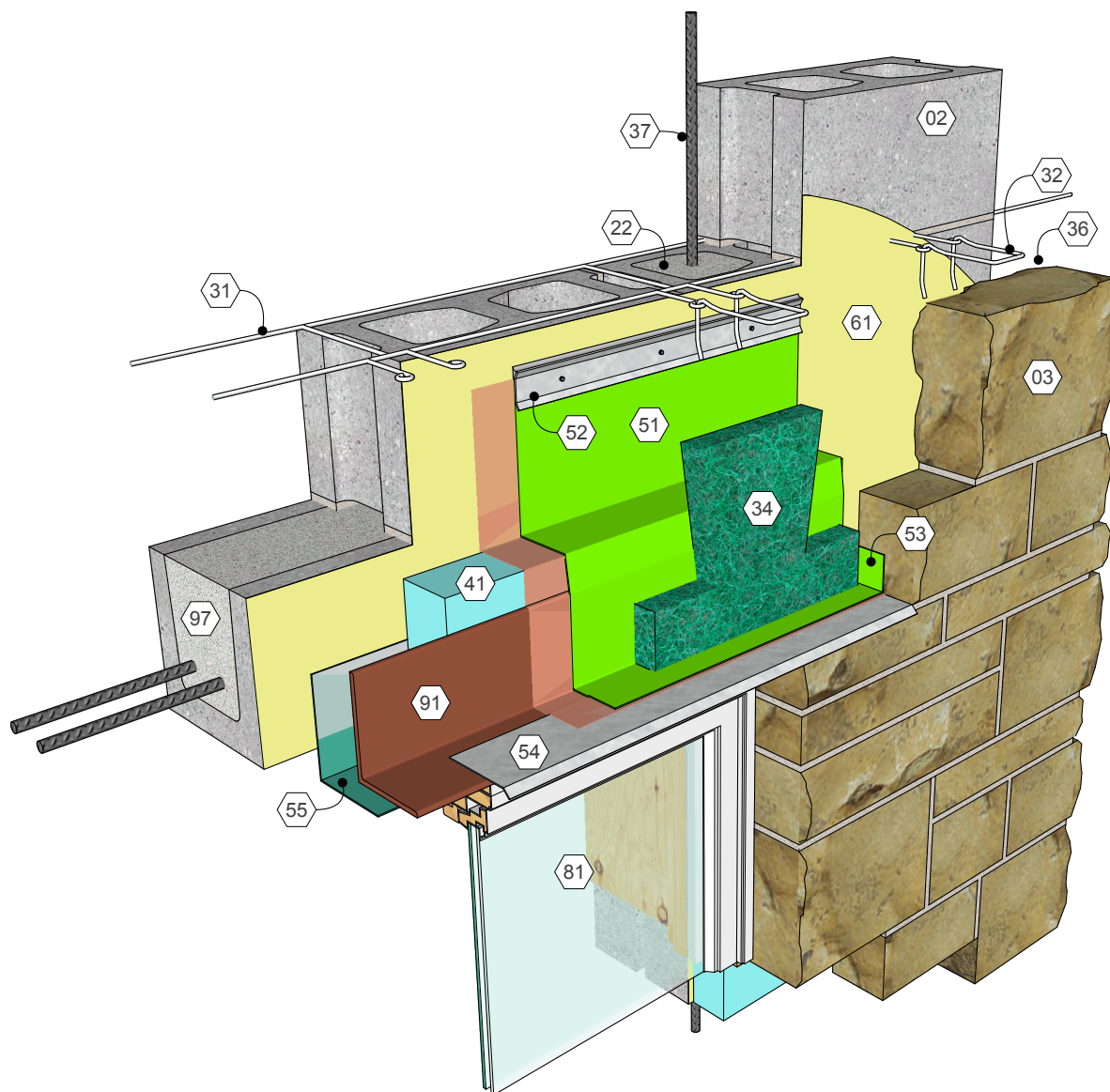
International Masonry Institute



800-IMI-0988

www.imiweb.org

© 2016 International Masonry Institute



WINDOW HEAD
Detail 03.030.0601

Anchored stone veneer
9/8/16